

# AN UNRELENTING HEADACHE

Sahand Ensafi, B.Hsc (PA), CCPA

September 21, 2022



@TorontoER\_PA

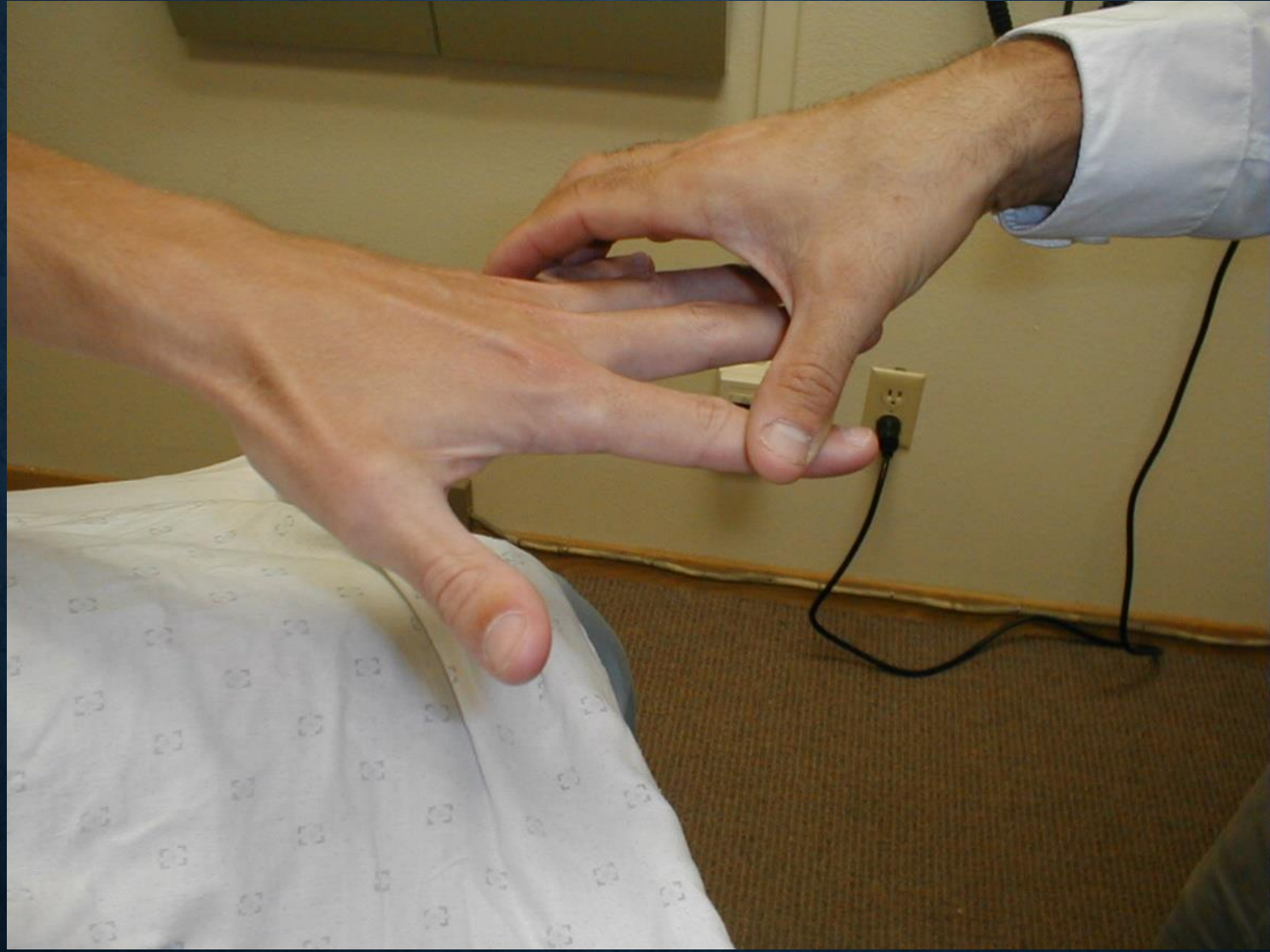
**No disclosures**







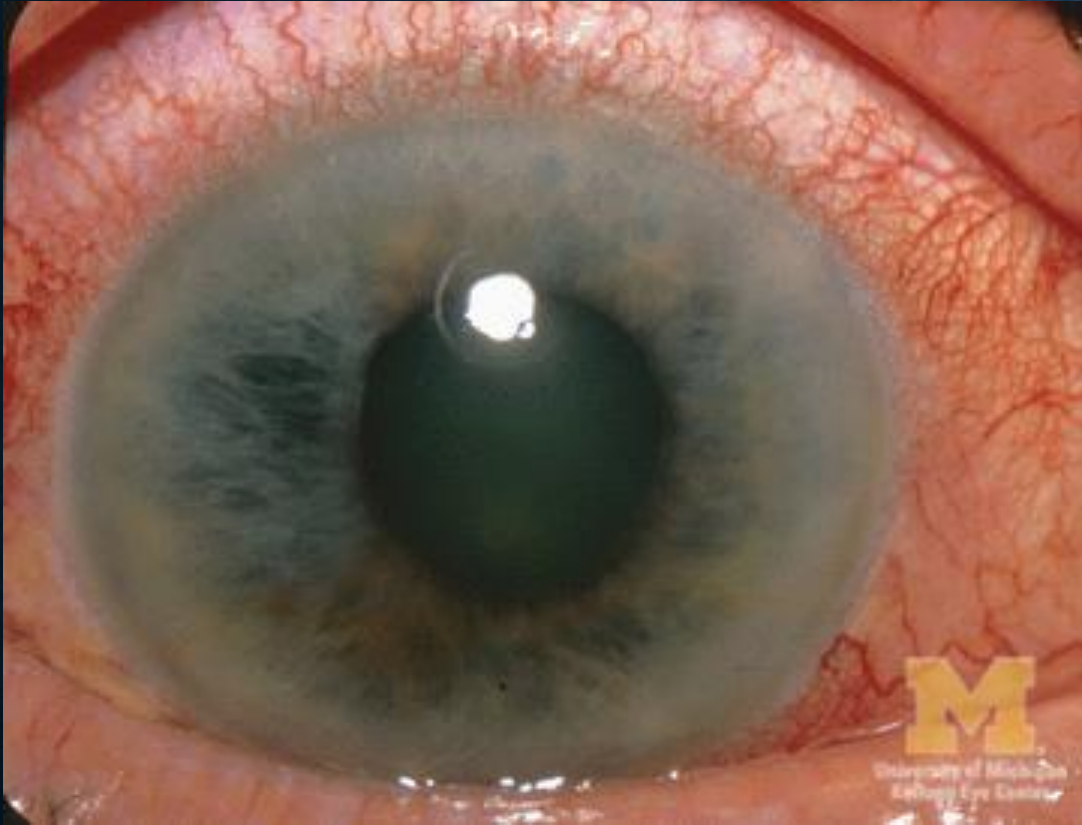
















## Anchoring (CMPA)

- “Focusing on one particular symptom, sign, or piece of information, or a particular diagnosis early in the diagnostic process and failing to make any adjustments for other possibilities — either by discounting or ignoring them”
- **Broad Differentials**
  - Don't forget about glaucoma in your H/A patient





**Thank You**



Photocred @Jason Baraj